



2021-07-23 09:44:20
 Choose competition:
 2021 NZ Secondary School Swimming Championships
 Choose language:
 [Flags: Norway, United Kingdom, Denmark, Finland, Poland]

Choose an alternative: [Home](#) [Competitions](#) [Program](#) [Results](#) [By event](#) [Filearchive](#) [LIVE](#)

Results for 2021 NZ Secondary School Swimming Championships

Below are all results from the competition shown by session.

Choose session: [Session 1](#) [Session 2](#) [Session 3](#) [Session 4](#) [Session 5](#) [Session 6](#)

Session Three

Results

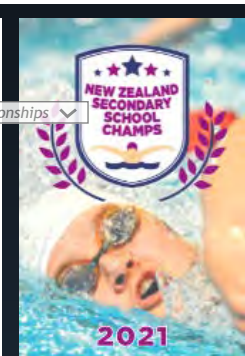
2021 NZ Secondary School Swimming Championships

Place: Organizer: Swimming New Zealand
 Pool: 25m Compe on Date: Jul 22, 2021 to Jul 25, 2021

Event 27, 100m Freestyle Women 13 years - Final

13NZR	56.36	Gabrielle Fa'amausili	UNIAK			30/09/2013
14NZR	55.80	Laura Li lejohn	SPCWK			6/07/2019
NZR	53.57	Hayley Palmer	1989 UNIAK (NZL)	Australia		9/08/2009
18NZR	54.36	Hayley Palmer	NSSAK (NZL)			14/12/2007
17NZR	54.96	Gabrielle Fa'amausili	UNIAK (NZL)			7/09/2017
15NZR	55.14	Gabrielle Fa'amausili	UNIAK (NZL)			15/08/2015
16NZR	53.92	Laura Li lejohn	2003 STPWK (NZL)			15/10/2020

Rank	Name	Age	Team	R.T.	FINA	Time	Diff
1	Chloe Peters		Sacred Heart Girls College - H			59.18	
	Entry me: 59.44 (-0.26)						
	25m: 13.62	50m: 28.60 (14.98)		75m: 44.09 (15.49)		100m: 59.18 (15.09)	
2	Ania Maritz		Rangitoto College			59.34	+0.16
	Entry me: 58.73 (+0.61)						
	25m: 13.61	50m: 28.65 (15.04)		75m: 44.19 (15.54)		100m: 59.34 (15.15)	
3	Lola Nicholls		Napier Girls High School	+0.54		59.83	+0.65
	Entry me: 1:01.25 (-1.42)						
	25m: 13.58	50m: 28.57 (14.99)		75m: 44.30 (15.73)		100m: 59.83 (15.53)	
4	Natalie Johnson		St Peters School (Cambridge)			1:01.32	+2.14
	Entry me: 1:01.16 (+0.16)						
	25m: 13.91	50m: 29.38 (15.47)		75m: 45.48 (16.10)		100m: 1:01.32 (15.84)	
5	Mia Laban		Pakuranga College			1:01.87	+2.69
	Entry me: 1:03.24 (-1.37)						
	25m: 13.98	50m: 29.48 (15.50)		75m: 45.78 (16.30)		100m: 1:01.87 (16.09)	
6	Olivia Emme		Cambridge High School	+0.61		1:02.16	+2.98
	Entry me: 1:02.06 (+0.10)						
	25m: 14.19	50m: 29.95 (15.76)		75m: 46.28 (16.33)		100m: 1:02.16 (15.88)	
7	Amelia Duff		Saint Ken gern College			1:02.25	+3.07
	Entry me: 1:04.82 (-2.57)						
	25m: 14.10	50m: 29.51 (15.41)		75m: 46.15 (16.64)		100m: 1:02.25 (16.10)	
8	Lucy Price		Scots College	+0.53		1:02.47	+3.29
	Entry me: 1:02.57 (-0.10)						
	25m: 14.31	50m: 30.51 (16.20)		75m: 46.92 (16.41)		100m: 1:02.47 (15.55)	
9	Zaniqua Pra -Smith		Mt Maunganui College	+0.76		1:02.61	+3.43
	Entry me: 1:03.64 (-1.03)						
	25m: 14.52	50m: 30.53 (16.01)		75m: 46.95 (16.42)		100m: 1:02.61 (15.66)	
10	Alyssa Tapper		St Peters School (Cambridge)			1:02.88	+3.70
	Entry me: 1:04.43 (-1.55)						
	25m: 14.85	50m: 30.76 (15.91)		75m: 47.04 (16.28)		100m: 1:02.88 (15.84)	
11	Kaira Wohlfarth		Westlake Girls High School			1:02.96	+3.78
	Entry me: 1:02.07 (+0.89)						
	25m: 14.20	50m: 30.00 (15.80)		75m: 46.53 (16.53)		100m: 1:02.96 (16.43)	
12	Karolina Joyce		John Paul College	+0.81		1:03.23	+4.05
	Entry me: 1:01.91 (+1.32)						
	25m: 14.25	50m: 29.92 (15.67)		75m: 46.85 (16.93)		100m: 1:03.23 (16.38)	
13	Sophie Barry		Glendowie College			1:03.25	+4.07
	Entry me: 1:03.10 (+0.15)						
	25m: 14.11	50m: 29.89 (15.78)		75m: 46.51 (16.62)		100m: 1:03.25 (16.74)	
14	Abigail Williams		Lynfield College			1:03.38	+4.20
	Entry me: 1:04.59 (-1.21)						
	25m: 14.34	50m: 30.09 (15.75)		75m: 46.72 (16.63)		100m: 1:03.38 (16.66)	
15	Hayley McIntyre		Waikato Diocesan School			1:03.58	+4.40
	Entry me: 1:04.47 (-0.89)						
	25m: 14.56	50m: 30.64 (16.08)		75m: 47.09 (16.45)		100m: 1:03.58 (16.49)	
16	Anika Anderson Peneha		Queen Margaret College	+0.73		1:03.74	+4.56
	Entry me: 1:03.88 (-0.14)						
	25m: 14.44	50m: 30.86 (16.42)		75m: 47.49 (16.63)		100m: 1:03.74 (16.25)	
16	Isabel Bouzaid		Westlake Girls High School	+0.64		1:03.74	+4.56
	Entry me: 1:03.16 (+0.58)						
	25m: 14.36	50m: 30.53 (16.17)		75m: 47.06 (16.53)		100m: 1:03.74 (16.68)	
18	Olivia Bates		Epsom Girls Grammar School			1:03.97	+4.79
	Entry me: 1:06.25 (-2.28)						
	25m: 15.09	50m: 31.60 (16.51)		75m: 48.01 (16.41)		100m: 1:03.97 (15.96)	
19	Aria Bannister		Wanganui High School			1:03.98	+4.80
	Entry me: 1:06.47 (-2.49)						
	25m: 14.63	50m: 30.66 (16.03)		75m: 47.32 (16.66)		100m: 1:03.98 (16.66)	
20	Bianca Yeldon		Queen Margaret College	+0.72		1:04.08	+4.90
	Entry me: 1:02.68 (+1.40)						



25m: 14.14		50m: 30.19 (16.05)	75m: 47.26 (17.07)	100m: 1:04.08 (16.82)	
21 Isobella Davoren		Mt Maunganui College		+0.57	1:04.27 +5.09
Entry me: 1:04.12 (+0.15)		25m: 14.83	50m: 31.38 (16.55)	75m: 47.97 (16.59)	100m: 1:04.27 (16.30)
21 Heidi Roberts		Matamata College		+0.68	1:04.27 +5.09
Entry me: 1:05.12 (-0.85)		25m: 14.85	50m: 30.95 (16.10)	75m: 47.42 (16.47)	100m: 1:04.27 (16.85)
23 Olivia Taylor		Rangitoto College			1:04.39 +5.21
Entry me: 1:03.92 (+0.47)		25m: 14.72	50m: 31.09 (16.37)	75m: 47.77 (16.68)	100m: 1:04.39 (16.62)
24 Sophie Young-Wilson		Whanganui Collegiate School			1:04.60 +5.42
Entry me: 1:04.81 (-0.21)		25m: 14.97	50m: 31.10 (16.13)	75m: 47.96 (16.86)	100m: 1:04.60 (16.64)
25 Ava Tremain		John Paul College		+0.69	1:04.95 +5.77
Entry me: 1:03.97 (+0.98)		25m: 14.47	50m: 30.68 (16.21)	75m: 47.90 (17.22)	100m: 1:04.95 (17.05)
25 Sofia Bray		Baradene College			1:04.95 +5.77
Entry me: 1:05.92 (-0.97)		25m: 14.74	50m: 31.38 (16.64)	75m: 48.32 (16.94)	100m: 1:04.95 (16.63)
27 Holly Nelson		Rangitoto College		+0.46	1:05.19 +6.01
Entry me: 1:02.99 (+2.20)		25m: 14.55	50m: 31.12 (16.57)	75m: 48.16 (17.04)	100m: 1:05.19 (17.03)
28 Sophie Hunter		St Peters School (Cambridge)		+0.75	1:05.51 +6.33
Entry me: 1:06.23 (-0.72)		25m: 14.80	50m: 31.37 (16.57)	75m: 48.50 (17.13)	100m: 1:05.51 (17.01)
29 Kaitlyn Williams		St Ma hew's Collegiate		+0.74	1:06.02 +6.84
Entry me: 1:05.62 (+0.40)		25m: 14.97	50m: 31.49 (16.52)	75m: 48.76 (17.27)	100m: 1:06.02 (17.26)
30 Xanthee Aus n		Birkenhead College			1:06.14 +6.96
Entry me: 1:05.91 (+0.23)		25m: 14.91	50m: 31.39 (16.48)	75m: 48.79 (17.40)	100m: 1:06.14 (17.35)
31 Holly Stanford		Napier Girls High School			1:06.23 +7.05
Entry me: 1:04.35 (+1.88)		25m: 14.70	50m: 31.11 (16.41)	75m: 48.98 (17.87)	100m: 1:06.23 (17.25)
32 Anahera Mar n		Inglewood High School			1:06.27 +7.09
Entry me: 1:01.36 (+4.91)		25m: 14.20	50m: 30.22 (16.02)	75m: 46.97 (16.75)	100m: 1:06.27 (19.30)
33 Charlo e Rose		Western Heights High School			1:06.35 +7.17
Entry me: 1:05.68 (+0.67)		25m: 15.35	50m: 32.20 (16.85)	75m: 49.43 (17.23)	100m: 1:06.35 (16.92)
34 Hannah Kiernan		Rotorua Lakes High School		+0.60	1:07.14 +7.96
Entry me: 1:05.70 (+1.44)		25m: 15.07	50m: 32.05 (16.98)	75m: 49.50 (17.45)	100m: 1:07.14 (17.64)

Event official at: 23/07/2021 7:40:15 pm

Event 27, 100m Freestyle Women 14 years - Final

13NZR	56.36	Gabrielle Fa'amausili	UNIAK		30/09/2013
14NZR	55.80	Laura Li lejohn	SPCWK		6/07/2019
NZR	53.57	Hayley Palmer	1989 UNIAK (NZL)	Australia	9/08/2009
18NZR	54.36	Hayley Palmer	NSSAK (NZL)		14/12/2007
17NZR	54.96	Gabrielle Fa'amausili	UNIAK (NZL)		7/09/2017
15NZR	55.14	Gabrielle Fa'amausili	UNIAK (NZL)		15/08/2015
16NZR	53.92	Laura Li lejohn	2003 STPWK (NZL)		15/10/2020

Rank	Name	Age	Team	R.T.	FINA	Time	Diff
1	Amelia Bray		Baradene College	+0.57		57.90	
	Entry me: 59.68 (-1.78)		25m: 13.31	50m: 27.88 (14.57)	75m: 43.11 (15.23)	100m: 57.90 (14.79)	
2	Danielle Asiata		Macleans College			58.58	+0.68
	Entry me: 58.33 (+0.25)		25m: 13.45	50m: 28.18 (14.73)	75m: 43.55 (15.37)	100m: 58.58 (15.03)	
3	Monique Bartle		Mt Maunganui College	+0.57		59.80	+1.90
	Entry me: 1:00.40 (-0.60)		25m: 13.48	50m: 28.47 (14.99)	75m: 44.17 (15.70)	100m: 59.80 (15.63)	
4	Mulan Chan See		Macleans College	+0.54		1:00.09	+2.19
	Entry me: 1:01.01 (-0.92)		25m: 13.72	50m: 28.51 (14.79)	75m: 44.30 (15.79)	100m: 1:00.09 (15.79)	
5	Manutaeao Faalogo-Lilo		St Mary's College Ponsonby			1:00.30	+2.40
	Entry me: 58.50 (+1.80)		25m: 14.02	50m: 29.11 (15.09)	75m: 44.88 (15.77)	100m: 1:00.30 (15.42)	
6	Paikea Cecil		Tamaki College	+0.55		1:00.97	+3.07
	Entry me: 1:00.62 (+0.35)		25m: 14.10	50m: 30.02 (15.92)	75m: 45.59 (15.57)	100m: 1:00.97 (15.38)	
7	Sophie Sam		Otago Girls High School	+0.57		1:01.00	+3.10
	Entry me: 1:01.78 (-0.78)		25m: 14.03	50m: 29.33 (15.30)	75m: 45.22 (15.89)	100m: 1:01.00 (15.78)	
8	Eileena Bao		Rangitoto College			1:01.06	+3.16
	Entry me: 1:00.86 (+0.20)		25m: 13.97	50m: 29.36 (15.39)	75m: 45.60 (16.24)	100m: 1:01.06 (15.46)	
9	Arianna Roberts		Papamoa College	+0.84		1:01.11	+3.21
	Entry me: 1:01.82 (-0.71)		25m: 13.97	50m: 29.41 (15.44)	75m: 45.35 (15.94)	100m: 1:01.11 (15.76)	
10	Ariella Ripohau		Kerikeri High School			1:01.15	+3.25
	Entry me: 1:00.49 (+0.66)		25m: 14.16	50m: 29.53 (15.37)	75m: 45.23 (15.70)	100m: 1:01.15 (15.92)	
11	Brooke Benne		Villa Maria College			1:01.23	+3.33
	Entry me: 59.84 (+1.39)		25m: 14.25	50m: 29.83 (15.58)	75m: 45.81 (15.98)	100m: 1:01.23 (15.42)	
12	Amelie Aus n		Waikato Diocesan School	+0.54		1:01.30	+3.40
	Entry me: 1:00.79 (+0.51)		25m: 14.05	50m: 29.33 (15.28)	75m: 45.14 (15.81)	100m: 1:01.30 (16.16)	
13	Lily Humphreys		Carmel College	+0.66		1:01.72	+3.82
	Entry me: 1:01.92 (-0.20)		25m: 13.82	50m: 29.53 (15.71)	75m: 45.54 (16.01)	100m: 1:01.72 (16.18)	
14	Lucy Lawrence		Matamata College	+0.80		1:01.86	+3.96

Entry me: 59.94 (+1.92)	25m: 14.28	50m: 29.71 (15.43)	75m: 46.07 (16.36)	100m: 1:01.86 (15.79)
15 Freya Hingston	Macleans College			1:02.13 +4.23
Entry me: 59.59 (+2.54)	25m: 14.10	50m: 29.67 (15.57)	75m: 46.02 (16.35)	100m: 1:02.13 (16.11)
16 Emma Bain	Taieri College			+0.53 1:02.17 +4.27
Entry me: 1:00.94 (+1.23)	25m: 14.11	50m: 29.66 (15.55)	75m: 45.95 (16.29)	100m: 1:02.17 (16.22)
17 Elizabeth Brennan	Carmel College			1:02.25 +4.35
Entry me: 1:02.08 (+0.17)	25m: 14.17	50m: 29.91 (15.74)	75m: 46.22 (16.31)	100m: 1:02.25 (16.03)
18 Zoe Pedersen	Whangaparaoa College			+0.62 1:02.29 +4.39
Entry me: 1:02.36 (-0.07)	25m: 13.95	50m: 30.02 (16.07)	75m: 46.63 (16.61)	100m: 1:02.29 (15.66)
19 Sasha van Wijk	Westlake Girls High School			+0.71 1:02.41 +4.51
Entry me: 1:02.32 (+0.09)	25m: 14.15	50m: 29.96 (15.81)	75m: 46.24 (16.28)	100m: 1:02.41 (16.17)
20 Ngamihi Simpson	John Paul College			1:02.42 +4.52
Entry me: 1:02.40 (+0.02)	25m: 14.24	50m: 29.96 (15.72)	75m: 46.20 (16.24)	100m: 1:02.42 (16.22)
21 Jasmine Lyles	Pinehurst School			1:02.50 +4.60
Entry me: 1:01.21 (+1.29)	25m: 14.42	50m: 30.18 (15.76)	75m: 46.48 (16.30)	100m: 1:02.50 (16.02)
22 Isabelle Wightman	Inglewood High School			+0.90 1:02.58 +4.68
Entry me: 1:01.83 (+0.75)	25m: 14.20	50m: 30.07 (15.87)	75m: 46.42 (16.35)	100m: 1:02.58 (16.16)
23 Evie Skidmore	Woodford House			+0.62 1:02.95 +5.05
Entry me: 1:01.53 (+1.42)	25m: 14.46	50m: 30.28 (15.82)	75m: 46.54 (16.26)	100m: 1:02.95 (16.41)
24 Kaylah Reynolds	Wairoa College			1:03.05 +5.15
Entry me: 1:03.04 (+0.01)	25m: 14.78	50m: 30.56 (15.78)	75m: 46.88 (16.32)	100m: 1:03.05 (16.17)
25 Louise Ecclestone	Epsom Girls Grammar School			+0.59 1:03.17 +5.27
Entry me: 1:03.21 (-0.04)	25m: 14.13	50m: 30.01 (15.88)	75m: 46.49 (16.48)	100m: 1:03.17 (16.68)
26 Kate Molloy	Havelock North High School			+0.65 1:03.34 +5.44
Entry me: 1:05.35 (-2.01)	25m: 13.93	50m: 29.48 (15.55)	75m: 46.29 (16.81)	100m: 1:03.34 (17.05)
27 Charlo e McKenzie	St Cuthbert's College - Epsom			+0.58 1:03.44 +5.54
Entry me: 1:03.73 (-0.29)	25m: 14.44	50m: 30.76 (16.32)	75m: 47.11 (16.35)	100m: 1:03.44 (16.33)
28 Sophie Hay	Waikato Diocesan School			+0.55 1:03.53 +5.63
Entry me: 1:03.25 (+0.28)	25m: 14.42	50m: 30.62 (16.20)	75m: 47.15 (16.53)	100m: 1:03.53 (16.38)
29 Islay Boyes	St Cuthbert's College - Epsom			1:03.64 +5.74
Entry me: 1:03.05 (+0.59)	25m: 14.38	50m: 30.07 (15.69)	75m: 46.72 (16.65)	100m: 1:03.64 (16.92)
30 Trelise Chote	Tauranga Girls' College			1:03.70 +5.80
Entry me: 1:05.35 (-1.65)	25m: 14.55	50m: 30.77 (16.22)	75m: 47.83 (17.06)	100m: 1:03.70 (15.87)
30 Tyler McNaughten	Pukekohe High School			1:03.70 +5.80
Entry me: 1:04.41 (-0.71)	25m: 14.91	50m: 31.30 (16.39)	75m: 47.89 (16.59)	100m: 1:03.70 (15.81)
32 Ella Hamilton	Rangitoto College			1:03.82 +5.92
Entry me: 1:04.81 (-0.99)	25m: 14.53	50m: 30.68 (16.15)	75m: 47.60 (16.92)	100m: 1:03.82 (16.22)
33 Isla McNulty	Hillcrest High School			+0.69 1:03.93 +6.03
Entry me: 1:02.34 (+1.59)	25m: 14.49	50m: 30.79 (16.30)	75m: 47.22 (16.43)	100m: 1:03.93 (16.71)
34 Keana Woodfield	St Peters School (Cambridge)			+0.63 1:04.17 +6.27
Entry me: 1:03.53 (+0.64)	25m: 14.78	50m: 30.98 (16.20)	75m: 47.76 (16.78)	100m: 1:04.17 (16.41)
35 Lucy Gilmour	St Cuthbert's College - Epsom			1:04.46 +6.56
Entry me: 1:05.81 (-1.35)	25m: 14.90	50m: 31.12 (16.22)	75m: 48.24 (17.12)	100m: 1:04.46 (16.22)
36 Yalen-Sjaan Wong See	McAuley High School			1:04.92 +7.02
Entry me: 1:05.29 (-0.37)	25m: 14.79	50m: 30.99 (16.20)	75m: 47.81 (16.82)	100m: 1:04.92 (17.11)
37 Bella Dye	Matamata College			+0.77 1:05.04 +7.14
Entry me: 1:04.49 (+0.55)	25m: 15.14	50m: 31.32 (16.18)	75m: 48.30 (16.98)	100m: 1:05.04 (16.74)
38 Chiara Woodford	Cambridge High School			+0.64 1:05.25 +7.35
Entry me: 1:04.57 (+0.68)	25m: 14.68	50m: 30.74 (16.06)	75m: 48.12 (17.38)	100m: 1:05.25 (17.13)
39 Julia Kim	Westlake Girls High School			1:05.58 +7.68
Entry me: 1:04.39 (+1.19)	25m: 14.11	50m: 30.56 (16.45)	75m: 48.07 (17.51)	100m: 1:05.58 (17.51)
40 Jessica Cochran	Pukekohe High School			1:05.98 +8.08
Entry me: 1:05.73 (+0.25)	25m: 14.94	50m: 31.54 (16.60)	75m: 49.21 (17.67)	100m: 1:05.98 (16.77)
41 Sophie Hutchens	St Hilda's Collegiate			1:06.10 +8.20
Entry me: 1:05.74 (+0.36)	25m: 15.23	50m: 32.00 (16.77)	75m: 49.41 (17.41)	100m: 1:06.10 (16.69)
42 Anabel Sco	Roncalli College			1:06.13 +8.23
Entry me: 1:05.99 (+0.14)	25m: 14.94	50m: 31.96 (17.02)	75m: 49.14 (17.18)	100m: 1:06.13 (16.99)
43 Michaela Fua mau	St Mary's College Ponsonby			+0.77 1:06.34 +8.44
Entry me: 1:04.61 (+1.73)	25m: 14.84	50m: 31.19 (16.35)	75m: 48.66 (17.47)	100m: 1:06.34 (17.68)
44 Urban Cooper-Kerapa	Sacred Heart Girls College - H			+0.57 1:06.39 +8.49
Entry me: 1:03.85 (+2.54)	25m: 14.48	50m: 31.70 (17.22)	75m: 48.98 (17.28)	100m: 1:06.39 (17.41)

Event official at: 23/07/2021 7:40:15 pm

Event 27, 100m Freestyle Women 15 years - Final

13NZR	56.36	Gabrielle Fa'amausili	UNI AK			30/09/2013
14NZR	55.80	Laura Li lejohn	SPCWK			6/07/2019
NZR	53.57	Hayley Palmer	1989 UNI AK (NZL)	Australia		9/08/2009
18NZR	54.36	Hayley Palmer	NSSAK (NZL)			14/12/2007
17NZR	54.96	Gabrielle Fa'amausili	UNI AK (NZL)			7/09/2017
15NZR	55.14	Gabrielle Fa'amausili	UNI AK (NZL)			15/08/2015
16NZR	53.92	Laura Li lejohn	2003 STPWK (NZL)			15/10/2020

Rank	Name	Age	Team	R.T.	FINA	Time	Diff
1	Gabrielle Doyle		Rangitoto College	+0.55		57.74	
	Entry me: 58.97 (-1.23)						
	25m: 13.29	50m: 27.80 (14.51)	75m: 42.93 (15.13)			100m: 57.74 (14.81)	
2	Talitha McEwan		Mt Maunganui College			58.09	+0.35
	Entry me: 57.24 (+0.85)						
	25m: 13.56	50m: 28.24 (14.68)	75m: 43.29 (15.05)			100m: 58.09 (14.80)	
3	Alexandra Campion		Saint Ken gern College	+0.70		58.80	+1.06
	Entry me: 59.25 (-0.45)						
	25m: 13.35	50m: 28.29 (14.94)	75m: 43.53 (15.24)			100m: 58.80 (15.27)	
4	Liv Peebles		Saint Ken gern College	+0.71		59.21	+1.47
	Entry me: 58.07 (+1.14)						
	25m: 13.45	50m: 28.41 (14.96)	75m: 43.99 (15.58)			100m: 59.21 (15.22)	
5	Courtney Ma hews		One Tree Hill College			59.27	+1.53
	Entry me: 57.67 (+1.60)						
	25m: 13.35	50m: 28.57 (15.22)	75m: 44.10 (15.53)			100m: 59.27 (15.17)	
6	Milana Tapper		St Peters School (Cambridge)			59.51	+1.77
	Entry me: 1:01.69 (-2.18)						
	25m: 13.66	50m: 28.84 (15.18)	75m: 44.27 (15.43)			100m: 59.51 (15.24)	
7	Eva Allan		Diocesan School For Girls			59.63	+1.89
	Entry me: 57.80 (+1.83)						
	25m: 13.91	50m: 28.92 (15.01)	75m: 44.35 (15.43)			100m: 59.63 (15.28)	
8	Kate Wheeler		Pukekohe High School	+0.74		59.96	+2.22
	Entry me: 59.39 (+0.57)						
	25m: 13.61	50m: 28.53 (14.92)	75m: 44.15 (15.62)			100m: 59.96 (15.81)	
9	Olivia Sweetman		Saint Ken gern College	+0.82		1:00.12	+2.38
	Entry me: 59.98 (+0.14)						
	25m: 13.88	50m: 28.79 (14.91)	75m: 44.55 (15.76)			100m: 1:00.12 (15.57)	
10	Lanihei Connolly		Baradene College	+0.64		1:00.42	+2.68
	Entry me: 59.85 (+0.57)						
	25m: 13.67	50m: 28.91 (15.24)	75m: 44.60 (15.69)			100m: 1:00.42 (15.82)	
11	Sophie Bryant		Napier Girls High School	+0.49		1:00.58	+2.84
	Entry me: 1:00.42 (+0.16)						
	25m: 13.93	50m: 29.04 (15.11)	75m: 44.75 (15.71)			100m: 1:00.58 (15.83)	
12	Sophie Perry		Hauraki Plains College			1:00.82	+3.08
	Entry me: 59.39 (+1.43)						
	25m: 13.86	50m: 29.14 (15.28)	75m: 44.99 (15.85)			100m: 1:00.82 (15.83)	
13	Kendall Oliver		Pakuranga College			1:01.02	+3.28
	Entry me: 1:02.37 (-1.35)						
	25m: 14.16	50m: 29.66 (15.50)	75m: 45.70 (16.04)			100m: 1:01.02 (15.32)	
14	Armani Tohaia		Pukekohe High School	+0.67		1:01.21	+3.47
	Entry me: 59.83 (+1.38)						
	25m: 14.15	50m: 29.29 (15.14)	75m: 45.33 (16.04)			100m: 1:01.21 (15.88)	
15	Isla Petherbridge		Baradene College			1:01.23	+3.49
	Entry me: 1:01.74 (-0.51)						
	25m: 14.03	50m: 29.71 (15.68)	75m: 45.30 (15.59)			100m: 1:01.23 (15.93)	
16	Lena Hamblyn-Ough		Westlake Girls High School			1:01.51	+3.77
	Entry me: 1:01.45 (+0.06)						
	25m: 14.22	50m: 29.60 (15.38)	75m: 45.47 (15.87)			100m: 1:01.51 (16.04)	
17	Danielle Curle		Botany Downs Secondary Colleg			1:01.78	+4.04
	Entry me: 1:01.84 (-0.06)						
	25m: 14.28	50m: 29.95 (15.67)	75m: 46.03 (16.08)			100m: 1:01.78 (15.75)	
18	Annika Yeldon		Queen Margaret College	+0.74		1:02.18	+4.44
	Entry me: 59.65 (+2.53)						
	25m: 13.85	50m: 29.59 (15.74)	75m: 45.79 (16.20)			100m: 1:02.18 (16.39)	
19	Caitlin Cooke		Rangitoto College			1:02.36	+4.62
	Entry me: 1:00.97 (+1.39)						
	25m: 14.26	50m: 30.34 (16.08)	75m: 46.72 (16.38)			100m: 1:02.36 (15.64)	
20	Maia Williams		St Peters School (Cambridge)	+0.66		1:02.47	+4.73
	Entry me: 1:03.27 (-0.80)						
	25m: 14.40	50m: 30.29 (15.89)	75m: 46.44 (16.15)			100m: 1:02.47 (16.03)	
21	Anna McGowan		Mt Albert Grammar School			1:02.49	+4.75
	Entry me: 1:03.79 (-1.30)						
	25m: 14.13	50m: 29.93 (15.80)	75m: 46.54 (16.61)			100m: 1:02.49 (15.95)	
22	Maddy Barr		St Andrew's College	+0.67		1:02.95	+5.21
	Entry me: 1:03.85 (-0.90)						
	25m: 14.31	50m: 30.11 (15.80)	75m: 46.65 (16.54)			100m: 1:02.95 (16.30)	
23	Olivia Tukia		Green Bay High School	+0.68		1:02.97	+5.23
	Entry me: 1:02.56 (+0.41)						
	25m: 14.14	50m: 29.76 (15.62)	75m: 46.36 (16.60)			100m: 1:02.97 (16.61)	
24	Emma Wallace		Baradene College			1:03.09	+5.35
	Entry me: 1:01.66 (+1.43)						
	25m: 14.14	50m: 29.70 (15.56)	75m: 46.24 (16.54)			100m: 1:03.09 (16.85)	
25	Savannah-Eve Mar n		Westlake Girls High School			1:03.13	+5.39
	Entry me: 1:03.33 (-0.20)						
	25m: 14.39	50m: 30.29 (15.90)	75m: 46.86 (16.57)			100m: 1:03.13 (16.27)	
26	Alina Jin		St Cuthbert's College - Epsom	+0.58		1:03.18	+5.44
	Entry me: 1:03.02 (+0.16)						
	25m: 14.59	50m: 30.44 (15.85)	75m: 47.09 (16.65)			100m: 1:03.18 (16.09)	
27	Caitlin Hewson		Otago Girls High School			1:03.37	+5.63
	Entry me: 1:02.24 (+1.13)						
	25m: 14.14	50m: 30.13 (15.99)	75m: 46.78 (16.65)			100m: 1:03.37 (16.59)	
28	Caitlin Roberts		St Andrew's College	+0.54		1:03.59	+5.85
	Entry me: 1:03.57 (+0.02)						
	25m: 14.64	50m: 30.69 (16.05)	75m: 46.97 (16.28)			100m: 1:03.59 (16.62)	

29 Thea Storey	Westlake Girls High School	1:03.76	+6.02
Entry me: 1:02.90 (+0.86)			
25m: 14.30	50m: 30.34 (16.04) 75m: 47.26 (16.92) 100m: 1:03.76 (16.50)		
30 Ayla Davie	Morrinsville College	1:04.73	+6.99
Entry me: 1:04.96 (-0.23)			
25m: 14.97	50m: 31.36 (16.39) 75m: 48.12 (16.76) 100m: 1:04.73 (16.61)		
31 Piper Burroughs	Havelock North High School	1:04.85	+7.11
Entry me: 1:04.80 (+0.05)			
25m: 14.15	50m: 29.92 (15.77) 75m: 47.55 (17.63) 100m: 1:04.85 (17.30)		
32 Willow Phillips	Pukekohe High School	1:05.11	+7.37
Entry me: 1:03.11 (+2.00)			
25m: 14.88	50m: 30.95 (16.07) 75m: 48.08 (17.13) 100m: 1:05.11 (17.03)		
33 Anna Lepua	St Mary's College Ponsonby	1:05.39	+7.65
Entry me: 1:01.22 (+4.17)			
25m: 14.43	50m: 30.60 (16.17) 75m: 48.01 (17.41) 100m: 1:05.39 (17.38)		
34 Arabella Duncan	Diocesan School For Girls	1:05.47	+7.73
Entry me: 1:03.76 (+1.71)			
25m: 14.87	50m: 31.32 (16.45) 75m: 48.37 (17.05) 100m: 1:05.47 (17.10)		
35 Madeline Coombes	Hillcrest High School	1:05.52	+7.78
Entry me: 1:03.34 (+2.18)			
25m: 14.65	50m: 30.91 (16.26) 75m: 48.10 (17.19) 100m: 1:05.52 (17.42)		
36 Paige Foster	Napier Girls High School	1:06.02	+8.28
Entry me: 1:05.43 (+0.59)			
25m: 15.35	50m: 31.84 (16.49) 75m: 48.98 (17.14) 100m: 1:06.02 (17.04)		

Event official at: 23/07/2021 7:40:15 pm

Event 27, 100m Freestyle Women 16 years - Final

13NZR	56.36	Gabrielle Fa'amausili	UNIAK		30/09/2013
14NZR	55.80	Laura Li lejohn	SPCWK		6/07/2019
NZR	53.57	Hayley Palmer	1989 UNIAK (NZL)	Australia	9/08/2009
18NZR	54.36	Hayley Palmer	NSSAK (NZL)		14/12/2007
17NZR	54.96	Gabrielle Fa'amausili	UNIAK (NZL)		7/09/2017
15NZR	55.14	Gabrielle Fa'amausili	UNIAK (NZL)		15/08/2015
16NZR	53.92	Laura Li lejohn	2003 STPWK (NZL)		15/10/2020

Rank	Name	Age Team	R.T.	FINA	Time	Diff
1	Summer Osborne	Rangitoto College			55.89	
	Entry me: 55.40 (+0.49)					
	25m: 12.77	50m: 26.81 (14.04) 75m: 41.49 (14.68) 100m: 55.89 (14.40)				
2	Keira Allo	Tauranga Girls' College	+0.58		57.55	+1.66
	Entry me: 57.35 (+0.20)					
	25m: 13.54	50m: 28.10 (14.56) 75m: 42.97 (14.87) 100m: 57.55 (14.58)				
3	Eva Borkowski	Craighead Diocesan School	+0.69		58.96	+3.07
	Entry me: 58.10 (+0.86)					
	25m: 13.63	50m: 28.73 (15.10) 75m: 44.03 (15.30) 100m: 58.96 (14.93)				
4	Melissa Cowen	Rangitoto College	+0.58		58.97	+3.08
	Entry me: 57.36 (+1.61)					
	25m: 13.84	50m: 29.26 (15.42) 75m: 44.59 (15.33) 100m: 58.97 (14.38)				
5	Savanna Bourke	St Peters School (Cambridge)			59.01	+3.12
	Entry me: 59.10 (-0.09)					
	25m: 13.07	50m: 27.77 (14.70) 75m: 43.29 (15.52) 100m: 59.01 (15.72)				
6	Tess Whineray	Western Springs College	+0.79		59.20	+3.31
	Entry me: 58.35 (+0.85)					
	25m: 13.74	50m: 28.66 (14.92) 75m: 44.06 (15.40) 100m: 59.20 (15.14)				
7	Zoe Crawford	Westlake Girls High School	+0.59		59.21	+3.32
	Entry me: 57.47 (+1.74)					
	25m: 13.59	50m: 28.47 (14.88) 75m: 44.02 (15.55) 100m: 59.21 (15.19)				
8	Beatrice Fordham Duncan	Queen Margaret College			59.25	+3.36
	Entry me: 58.92 (+0.33)					
	25m: 13.52	50m: 28.26 (14.74) 75m: 43.68 (15.42) 100m: 59.25 (15.57)				
9	Isabella Campion	Saint Ken gern College	+0.71		59.29	+3.40
	Entry me: 58.79 (+0.50)					
	25m: 13.54	50m: 28.47 (14.93) 75m: 43.87 (15.40) 100m: 59.29 (15.42)				
10	Pippa Nicol	Queen Margaret College			59.48	+3.59
	Entry me: 58.35 (+1.13)					
	25m: 13.73	50m: 28.74 (15.01) 75m: 44.15 (15.41) 100m: 59.48 (15.33)				
11	Amber George	Mt Albert Grammar School			59.88	+3.99
	Entry me: 56.47 (+3.41)					
	25m: 13.55	50m: 28.58 (15.03) 75m: 44.33 (15.75) 100m: 59.88 (15.55)				
12	Katelyn Flynn	St Peters School (Cambridge)			1:00.03	+4.14
	Entry me: 59.00 (+1.03)					
	25m: 13.57	50m: 28.68 (15.11) 75m: 44.35 (15.67) 100m: 1:00.03 (15.68)				
13	Estee Jacobs	Scots College	+0.72		1:00.12	+4.23
	Entry me: 58.07 (+2.05)					
	25m: 13.70	50m: 28.77 (15.07) 75m: 44.48 (15.71) 100m: 1:00.12 (15.64)				
14	Sarah Gutsell	Waikato Diocesan School	+0.62		1:00.18	+4.29
	Entry me: 59.35 (+0.83)					
	25m: 13.77	50m: 28.88 (15.11) 75m: 44.64 (15.76) 100m: 1:00.18 (15.54)				
15	Laura Thompson	Tauranga Girls' College	+0.48		1:01.12	+5.23
	Entry me: 1:00.81 (+0.31)					
	25m: 13.91	50m: 29.09 (15.18) 75m: 45.18 (16.09) 100m: 1:01.12 (15.94)				
16	Samantha Fowler	Samuel Marsden Collegiate Sch	+0.61		1:01.15	+5.26
	Entry me: 1:01.93 (-0.78)					
	25m: 13.81	50m: 28.98 (15.17) 75m: 44.99 (16.01) 100m: 1:01.15 (16.16)				
17	Molly Player	Samuel Marsden Collegiate Sch	+0.73		1:01.65	+5.76
	Entry me: 1:00.47 (+1.18)					
	25m: 14.06	50m: 29.75 (15.69) 75m: 46.01 (16.26) 100m: 1:01.65 (15.64)				
18	Trelise Dance	Baradene College	+0.69		1:01.72	+5.83
	Entry me: 1:03.89 (-2.17)					
	25m: 14.10	50m: 29.75 (15.65) 75m: 45.86 (16.11) 100m: 1:01.72 (15.86)				
19	Rebecca Wilkins	Kris n School	+0.71		1:01.74	+5.85
	Entry me: 1:01.31 (+0.43)					
	25m: 14.26	50m: 29.91 (15.65) 75m: 45.96 (16.05) 100m: 1:01.74 (15.78)				
20	Maia Adams	Kapi College			1:01.89	+6.00
	Entry me: 1:02.34 (-0.45)					

21 Izzy Sharp	25m: 14.02	50m: 29.77 (15.75)	75m: 46.00 (16.23)	100m: 1:01.89 (15.89)	
Entry me: 59.43 (+2.56)					Craighead Diocesan School +0.76 1:01.99 +6.10
22 Kennedy Molloy	25m: 14.14	50m: 29.76 (15.62)	75m: 45.94 (16.18)	100m: 1:01.99 (16.05)	
Entry me: 1:03.03 (-0.94)					Havelock North High School +0.37 1:02.09 +6.20
23 Zara Wilson	25m: 13.90	50m: 29.38 (15.48)	75m: 45.57 (16.19)	100m: 1:02.09 (16.52)	
Entry me: 1:01.80 (+0.42)					Westlake Girls High School +0.64 1:02.22 +6.33
24 Nina Goble	25m: 14.30	50m: 30.11 (15.81)	75m: 46.33 (16.22)	100m: 1:02.22 (15.89)	
Entry me: 1:01.31 (+1.08)					Inglewood High School 1:02.39 +6.50
25 Poppy Henderson	25m: 14.32	50m: 30.02 (15.70)	75m: 46.43 (16.41)	100m: 1:02.39 (15.96)	
Entry me: 1:02.48 (+0.34)					Columba College 1:02.82 +6.93
26 Hana Kerins	25m: 14.45	50m: 30.36 (15.91)	75m: 46.82 (16.46)	100m: 1:02.82 (16.00)	
Entry me: 1:02.51 (+0.96)					Waiopahu College +0.54 1:03.47 +7.58
27 Lina Stahlhut	25m: 14.30	50m: 30.15 (15.85)	75m: 46.83 (16.68)	100m: 1:03.47 (16.64)	
Entry me: 1:02.08 (+1.46)					John Paul College 1:03.54 +7.65
28 Lily Pearce	25m: 14.67	50m: 30.72 (16.05)	75m: 47.43 (16.71)	100m: 1:03.54 (16.11)	
Entry me: 1:00.05 (+3.72)					Tauranga Girls' College 1:03.77 +7.88
29 Alina Zabel	25m: 14.40	50m: 30.52 (16.12)	75m: 47.24 (16.72)	100m: 1:03.77 (16.53)	
Entry me: 1:02.32 (+1.59)					St Paul's Collegiate +0.76 1:03.91 +8.02
30 Isabella Houghton	25m: 14.14	50m: 29.92 (15.78)	75m: 46.79 (16.87)	100m: 1:03.91 (17.12)	
Entry me: 1:03.71 (+0.21)					Mt Albert Grammar School 1:03.92 +8.03
31 Jessie Dai	25m: 14.33	50m: 30.51 (16.18)	75m: 47.37 (16.86)	100m: 1:03.92 (16.55)	
Entry me: 1:04.58 (-0.64)					ACG Strathallan 1:03.94 +8.05
32 Hayley Foon	25m: 14.49	50m: 30.29 (15.80)	75m: 46.87 (16.58)	100m: 1:03.94 (17.07)	
Entry me: 1:04.86 (-0.63)					Whangarei Girls High School +0.62 1:04.23 +8.34
33 Anna Hutchens	25m: 14.39	50m: 30.52 (16.13)	75m: 47.60 (17.08)	100m: 1:04.23 (16.63)	
Entry me: 1:05.29 (-0.82)					St Hilda's Collegiate +0.46 1:04.47 +8.58
34 Astrid Kyle	25m: 14.45	50m: 30.45 (16.00)	75m: 47.29 (16.84)	100m: 1:04.47 (17.18)	
Entry me: 1:05.22 (-0.57)					Mt Roskill Grammar 1:04.65 +8.76
35 Rinoa Day	25m: 14.90	50m: 31.14 (16.24)	75m: 48.08 (16.94)	100m: 1:04.65 (16.57)	
Entry me: 1:03.37 (+1.62)					Sacred Heart Girls College - H 1:04.99 +9.10
36 Isabella Aitken	25m: 14.52	50m: 30.82 (16.30)	75m: 48.17 (17.35)	100m: 1:04.99 (16.82)	
Entry me: 1:05.12 (=)					Dunstan High School 1:05.12 +9.23
37 Peta Clark	25m: 14.24	50m: 30.22 (15.98)	75m: 47.63 (17.41)	100m: 1:05.12 (17.49)	
Entry me: 1:04.88 (+0.49)					Diocesan School For Girls +0.80 1:05.37 +9.48
38 Jessamy Roadley	25m: 15.27	50m: 31.70 (16.43)	75m: 48.77 (17.07)	100m: 1:05.37 (16.60)	
Entry me: 1:03.75 (+1.69)					Craighead Diocesan School +0.64 1:05.44 +9.55
39 Jade Morrison	25m: 14.82	50m: 31.58 (16.76)	75m: 48.55 (16.97)	100m: 1:05.44 (16.89)	
Entry me: 1:05.13 (+2.01)					Queen Margaret College +0.60 1:07.14 +11.25
	25m: 15.05	50m: 31.84 (16.79)	75m: 49.75 (17.91)	100m: 1:07.14 (17.39)	

Event official at: 23/07/2021 7:40:15 pm

Event 27, 100m Freestyle Women 17-18 years - Final

13NZR	56.36	Gabrielle Fa'amausili	UNIAK		30/09/2013
14NZR	55.80	Laura Li lejohn	SPCWK		6/07/2019
NZR	53.57	Hayley Palmer	1989 UNIAK (NZL)	Australia	9/08/2009
18NZR	54.36	Hayley Palmer	NSSAK (NZL)		14/12/2007
17NZR	54.96	Gabrielle Fa'amausili	UNIAK (NZL)		7/09/2017
15NZR	55.14	Gabrielle Fa'amausili	UNIAK (NZL)		15/08/2015
16NZR	53.92	Laura Li lejohn	2003 STPWK (NZL)		15/10/2020

Rank	Name	Age Team	R.T.	FINA	Time	Diff
1	Laura Li lejohn	St Paul's Collegiate	+0.50		54.03	14 NZR
	Entry me: 52.07 (+1.96)					
	25m: 12.37	50m: 26.08 (13.71)	75m: 40.03 (13.95)	100m: 54.03 (14.00)		
2	Aimee Crosbie	Diocesan School For Girls			55.30	+1.27
	Entry me: 56.12 (-0.82)					
	25m: 12.68	50m: 26.64 (13.96)	75m: 41.10 (14.46)	100m: 55.30 (14.20)		
3	Rae Kwan	Epsom Girls Grammar School	+0.64		57.28	+3.25
	Entry me: 57.69 (-0.41)					
	25m: 12.93	50m: 27.57 (14.64)	75m: 42.50 (14.93)	100m: 57.28 (14.78)		
4	Danielle Joblin	St Peters School (Cambridge)	+0.73		57.62	+3.59
	Entry me: 57.01 (+0.61)					
	25m: 13.19	50m: 27.65 (14.46)	75m: 42.71 (15.06)	100m: 57.62 (14.91)		
5	Sarah Wilson	Waikato Diocesan School			58.36	+4.33
	Entry me: 59.66 (-1.30)					
	25m: 13.36	50m: 28.24 (14.88)	75m: 43.41 (15.17)	100m: 58.36 (14.95)		
6	Bree Middleton	St Andrew's College			58.91	+4.88
	Entry me: 56.95 (+1.96)					
	25m: 13.39	50m: 28.02 (14.63)	75m: 43.58 (15.56)	100m: 58.91 (15.33)		
7	Jesse Welsh	Diocesan School For Girls	+0.64		59.02	+4.99
	Entry me: 57.22 (+1.80)					
	25m: 13.55	50m: 28.65 (15.10)	75m: 44.13 (15.48)	100m: 59.02 (14.89)		
8	Skyla MacDonald	Macleans College	+0.51		59.04	+5.01
	Entry me: 58.61 (+0.43)					
	25m: 13.79	50m: 28.65 (14.86)	75m: 43.84 (15.19)	100m: 59.04 (15.20)		
9	Jade Houston	St Peters School (Cambridge)			1:00.05	+6.02

Entry me: 1:00.01 (+0.04)	50m: 28.93 (14.91)	75m: 44.47 (15.54)	100m: 1:00.05 (15.58)
25m: 14.02			
10 Edie Ancell	Mt Albert Grammar School	+0.71	1:00.38 +6.35
Entry me: 59.49 (+0.89)	50m: 28.85 (15.37)	75m: 44.78 (15.93)	100m: 1:00.38 (15.60)
25m: 13.48			
11 MacKenzie Brears	Epsom Girls Grammar School		1:00.49 +6.46
Entry me: 58.60 (+1.89)	50m: 28.47 (15.05)	75m: 44.32 (15.85)	100m: 1:00.49 (16.17)
25m: 13.42			
12 Lily Cooney	Mt Maunganui College	+0.62	1:00.69 +6.66
Entry me: 59.23 (+1.46)	50m: 29.26 (15.16)	75m: 45.06 (15.80)	100m: 1:00.69 (15.63)
25m: 14.10			
13 Kasha Stokes	Mt Maunganui College	+0.64	1:01.54 +7.51
Entry me: 1:02.20 (-0.66)	50m: 28.95 (15.23)	75m: 45.28 (16.33)	100m: 1:01.54 (16.26)
25m: 13.72			
14 Gabriella Jacobs	Scots College	+0.62	1:02.10 +8.07
Entry me: 1:00.40 (+1.70)	50m: 30.01 (15.69)	75m: 46.18 (16.17)	100m: 1:02.10 (15.92)
25m: 14.32			
15 Isla Marsh	Mt Albert Grammar School	+0.34	1:02.30 +8.27
Entry me: 1:02.56 (-0.26)	50m: 29.77 (15.71)	75m: 46.34 (16.57)	100m: 1:02.30 (15.96)
25m: 14.06			
16 Lara Grozev	Mt Albert Grammar School		1:02.48 +8.45
Entry me: 1:01.96 (+0.52)	50m: 30.32 (15.78)	75m: 46.69 (16.37)	100m: 1:02.48 (15.79)
25m: 14.54			
17 Kelly Lewis	Waikato Diocesan School	+0.73	1:02.61 +8.58
Entry me: 58.28 (+4.33)	50m: 29.66 (15.54)	75m: 46.06 (16.40)	100m: 1:02.61 (16.55)
25m: 14.12			
18 Emma Maultsaid	Hillcrest High School	+0.55	1:02.97 +8.94
Entry me: 1:01.62 (+1.35)	50m: 30.15 (15.84)	75m: 46.63 (16.48)	100m: 1:02.97 (16.34)
25m: 14.31			
19 Sarita Hetherington	Pakuranga College	+0.67	1:03.89 +9.86
Entry me: 1:02.75 (+1.14)	50m: 30.45 (15.92)	75m: 47.40 (16.95)	100m: 1:03.89 (16.49)
25m: 14.53			
20 Leyah Wadham	Rangitoto College	+0.85	1:03.96 +9.93
Entry me: 1:01.43 (+2.53)	50m: 31.04 (16.41)	75m: 47.86 (16.82)	100m: 1:03.96 (16.10)
25m: 14.63			
21 Rebecca Loach	Garin College	+0.77	1:04.52 +10.49
Entry me: 1:03.62 (+0.90)	50m: 31.07 (16.15)	75m: 47.79 (16.72)	100m: 1:04.52 (16.73)
25m: 14.92			
21 Hannah Lawson	Mt Maunganui College		1:04.52 +10.49
Entry me: 1:03.82 (+0.70)	50m: 30.80 (16.02)	75m: 47.78 (16.98)	100m: 1:04.52 (16.74)
25m: 14.78			
23 Tamrah Titcombe	Queen Margaret College	+0.58	1:04.72 +10.69
Entry me: 1:00.93 (+3.79)	50m: 30.39 (16.09)	75m: 47.31 (16.92)	100m: 1:04.72 (17.41)
25m: 14.30			
24 Maia Clare	Pukekohe High School		1:04.95 +10.92
Entry me: 1:00.23 (+4.72)	50m: 30.65 (15.96)	75m: 47.82 (17.17)	100m: 1:04.95 (17.13)
25m: 14.69			

Event official at: 23/07/2021 7:40:15 pm

2021-07-23 19:43:47

Datahandling: WinGrodan 2.8

Licensed to: Swimming New Zealand

[RSS Feed](#) | [Kontakt](#) | [Integritetspolicy](#)

© Copyright 2013 IC Control Media & Sport